

THE COMMITTEE FOR LORNE



KAREN
PITT

COMMUNITY PROFILE

Karen's first memory of Lorne is the strong fragrance of the rosemary everlasting that grows above the shoreline opposite her house. When her parents bought their first car, they started coming here, first staying in guest houses during the 50's. She recalls her dad in the early 1950's, cooking sausages on stones by the Erskine River. In the 60's, they rented holiday houses and in 1972 her parents bought land opposite the beach and built a house with a studio. Her mother, a potter and later a painter, established Erskine Gallery to specialise in Australian ceramics.

Karen was educated in Melbourne and studied law. After six years with a mid-size law firm she took two years off to travel. On her return she lived in Lorne and for a year ran the gallery for her mother, before taking a position as university solicitor at Deakin in Geelong. Then it was off to Sydney for the next 25 years where she worked for not for profit organisations including Copyright Agency, Viscopy.

Karen's parents retired to Lorne in 1980 and threw themselves immediately into community activities, her mother into the arts and her dad as the secretary/treasurer of most of the sporting clubs and the local RSL. Karen visited from Sydney regularly and says even though she lived away from Lorne for over 35 years, "I never really left this town". A strong network created from working in Lorne during university holidays and later living here, made her retirement move here in September 2016 virtually painless.

Karen says she hasn't inherited her mother's artistic talents, "but I have bought more pottery than anyone needs in one life". She has inherited a community involvement gene that's for sure. During the last five to six years she has coordinated her work in Sydney with visiting her parents each month, including volunteering for each Lorne Sculpture Biennale for up to two weeks. The day after she retired to Lorne she was elected treasurer of the new LSB committee. She has already joined the support group at the Lorne CFA and has also been involved with LorneCare for some years.

As well as all this, she has a huge project of her own - renovating her family home, which one family builder describes as "pointing at things she wants done and waving her hands around."

She still has time for yoga, bushwalking, an interest in wildlife, garden design and music.

They say if you want something done, ask a busy person, don't they?

CW

LORNE WARD EVENTS CALENDAR

MARCH

- 16 **Murray to Moyne Lorne Spinners fundraising dinner, 6pm at The View @ Lorne Hotel. For bookings, please contact Lorne Community House on 5289 4383.**
- 26 **Deans Marsh Festival, Live music, local harvest, market stalls, dog jumping, kids events, sheep dog demos and much more. 10 am – 5pm at Deans Marsh Oval.**

APRIL

- 1 **First match of the 2017 CDFL Football Season. Lorne Dolphins vs Colac Imperials at Stribling Reserve. Full program of football and Netballacross all divisions and age groups.**
- 13 **Official opening of the 46th Annual Lions Easter Art Show at Senior Citizens Centre at 7.30pm. admission to opening is \$20, including glass of wine and finger food. Art Show open Easter Saturday and Sunday and Easter Monday until midday.**

Please forward the dates of your Lorne Ward community event via the contact details at the bottom of this page.

PLANNED BURNS AROUND LORNE

This autumn, Forest Fire Management Victoria, which includes Parks Victoria staff, Surf Coast Shire and the CFA are planning to do a number of planned burns in and around our communities. Lorne is one of the significant communities targeted this autumn to build on the good risk reduction work done in previous years.

The planned burns most likely to be scheduled in the next few weeks near Lorne are the Lorne-Saint George (46ha) and Lorne-Cora Lynn Creek (1264ha) planned burns.

Forest Fire Management firefighters are monitoring the level of moisture in fuels such as dead grasses, leaves and other fine fuels to help identify burning opportunities. Weather plays a big part in the decision-making around when to burn as fire fighters need stable weather (moderate temperatures and winds) for ignition and for the days after ignition.

Some planned burns will require Parks Victoria walking track and site closures. Forest Fire Management are committed to working hard after the burn is complete to get the sites open as soon as possible for the continued enjoyment of residents and visitors. Works along the tracks include hazardous trees treatment to prevent injuries or deaths and putting out any burning stumps to avoid anyone sustaining serious burns.

Possible closures are:

- Lemonade Creek Walking Track
- Erskine Falls Walking Track
- Blanket Leaf Picnic Area to Phantom Falls (Cora Lynn Walking Track)

Some planned burns will have traffic management on nearby roads like Erskine Falls Road with a further commitment to not hold locals and visitors up for more than 15 minutes unless absolutely necessary. Generally it will only be for 5 minutes or less.

To minimise smoke impacts on locals and visitors alike, the intent is to ignite planned burns around Lorne with a southerly influenced wind to blow the smoke away from your community, but there will be some smoke presence in town during the operations.

Crews will use aircraft to assist with igniting areas not accessible. The aircraft assisting with ignition will sound a siren to advise fire fighters that aerial ignition is about to occur. Please don't be concerned if you hear these alarms sounding.

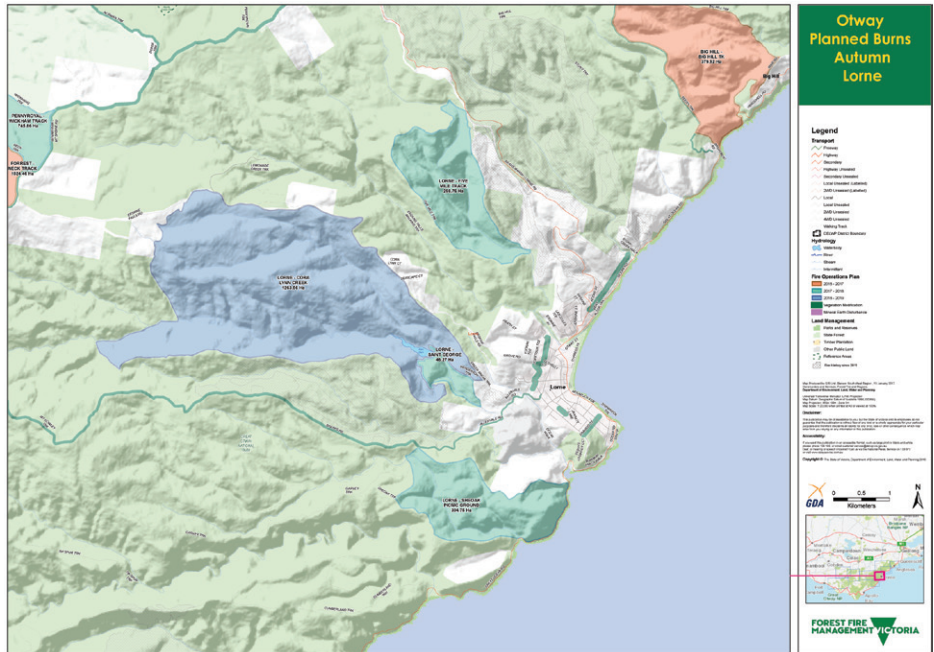
Providing timely information leading up to any planned burn program is another commitment we are making to best notify communities, business and other agencies about the planned burn program. The key is to notify you of when to expect an increase in activity in and around your community which may include vehicles, tankers, bulldozers and aircraft. If you have any advice or feedback on how we can improve our communications, we'd love to hear it.

Forest Fire Management Victoria, CFA and Surf Coast Shire are working together to do planned burning on both public and private land as a joint fuel management program and we thank you for your support and understanding through the autumn as we deliver this important risk reduction program for your community.

To find out about planned burns:

- Visit www.delwp.vic.gov.au/plannedburn
- Call Victorian Bushfire Information Line - 1800 240 667.
- Visit Vic Emergency - www.emergency.vic.gov.au
- Download the VicEmergency app.

David Rourke
District Manager, Otway
Forest Fire Management Victoria



A great day last Friday as the Committee for Lorne (CfL) hosted its first of four planned community lunches for 2017. In the fabulous environment of "The View" at Lorne Hotel, permanent and part time residents came together as one in a social environment to share and hear what the CfL has been up to and hear from a selection of our community leaders. With just under 70 in attendance the cross section of representation was excellent as we strive to improve on our communication within our networks.

Steve Atkinson from REOS Consulting, a Lorne local, updated the gathering on the progress being made with the second stage of our "Achieving Lorne's Aspirations" document. Steve shared that 27 local clubs and organizations had attended the workshops and had identified the existing actions that were already being undertaken within our community. Incredibly there are currently 132 actions underway and forming the base for helping us achieve our goals.

Equally impressive to me was that the majority of those actions, by a long way, were specifically aligned to our Aspirational Strategy of "Creating a community for everyone". In our endeavours to "fill the gaps", we are inviting our part time residents to have their input and will be offering the opportunity to any that couldn't attend the January workshops to a further workshop planned for Thursday April 13; full details to follow.

CEO of the Lorne Community Hospital, Kate Gillan, shared with us all the great work that is going on and future plans for their "all encompassing" health care service. Peter Spring received a very warm welcome as the Surf Coast Shire Citizen of the Year and spoke in glowing terms of the outcomes, processes, groundbreaking governance model and next steps of the newly created, and Council endorsed Stribling Reserve Master Plan.

Councillor Clive Goldsworthy provided an update on Surf Coast Shire, an apology from Mayor Brian McKitterick was noted and questions were addressed from the floor. Bo Campbell from DWELP provided a "phone in" update on the scheduled fuel reduction burns in the areas surrounding Lorne. He stressed that the two planned burns for our area were a priority between now and Easter and, subject to the weather patterns, were likely to be ignited by the time we go to press or during next week.

All in all a great luncheon with the next scheduled for Friday the 9th of June prior to the Queen's Birthday long weekend - mark in your diary now!

The Lorne Football and Netball Club are gearing up for another big season and the countdown to round 1 is well and truly underway. On the 1st of April the Dolphins kick off their season hosting the Colac Imperials Football Club at Stribling Reserve. Selena Walding and her team commence their 2017 "Club Meals" from tonight and the invitation is extended to all come along at around 6.00pm and be part of the Pod.

Ian Stewart

Ian Stewart
Chairman
Committee for Lorne

COMMITTEE
FOR LORNE



FOLLOW US ON TWITTER @Committee4Lorne

P.O Box 168, Lorne 3232. info@committeeforlorne.org.au www.cfl.org.au Phone: 0438 843 258